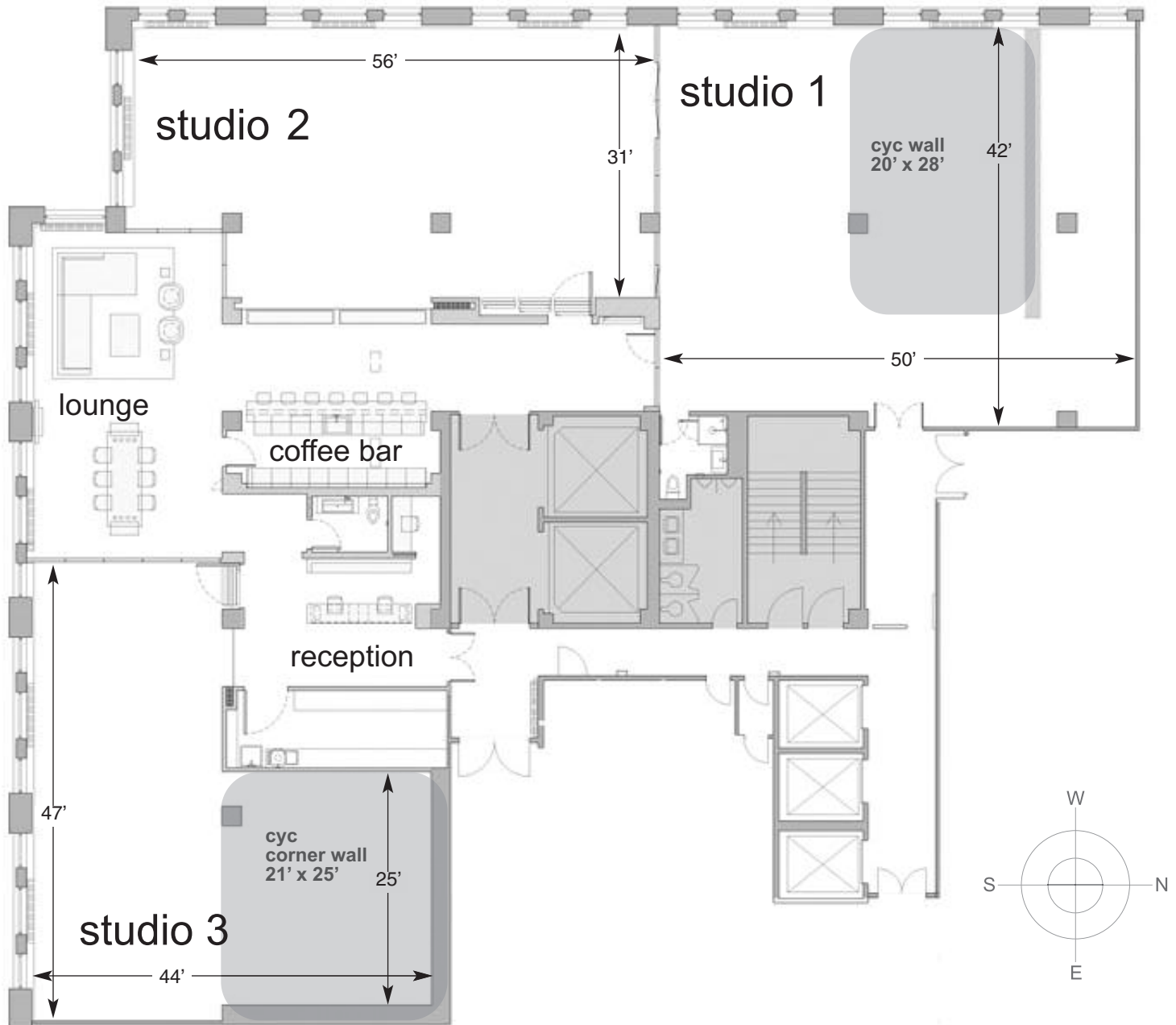


studio floor plans

tribeca skyline studios

205 hudson street • penthouse • ny, ny 10013 • t. (212) 344-1999 • f. (212) 226-6203

Tribeca Skyline Studios is a 7,500 sq ft penthouse studio space designed with a focus on integrating the latest in technology within a beautiful modern architectural daylight environment. Featuring spectacular views of the Hudson River and Lower Manhattan, Tribeca Skyline Studios is designed to provide you with the flexibility of creating your own private custom shooting space. The modular configuration of the state of the art wall system, allows for studios as small as 1600 sq ft to as large as 7500 sq ft. In addition, our 15,000+ sq ft roof deck is available for shoots or events.



studio floor plans

tribeca skyline studios

205 hudson street • penthouse • ny, ny 10013 • t. (212) 344-1999 • f. (212) 226-6203

studio 1

Square Footage: 2,000

Ceiling Height: 13'

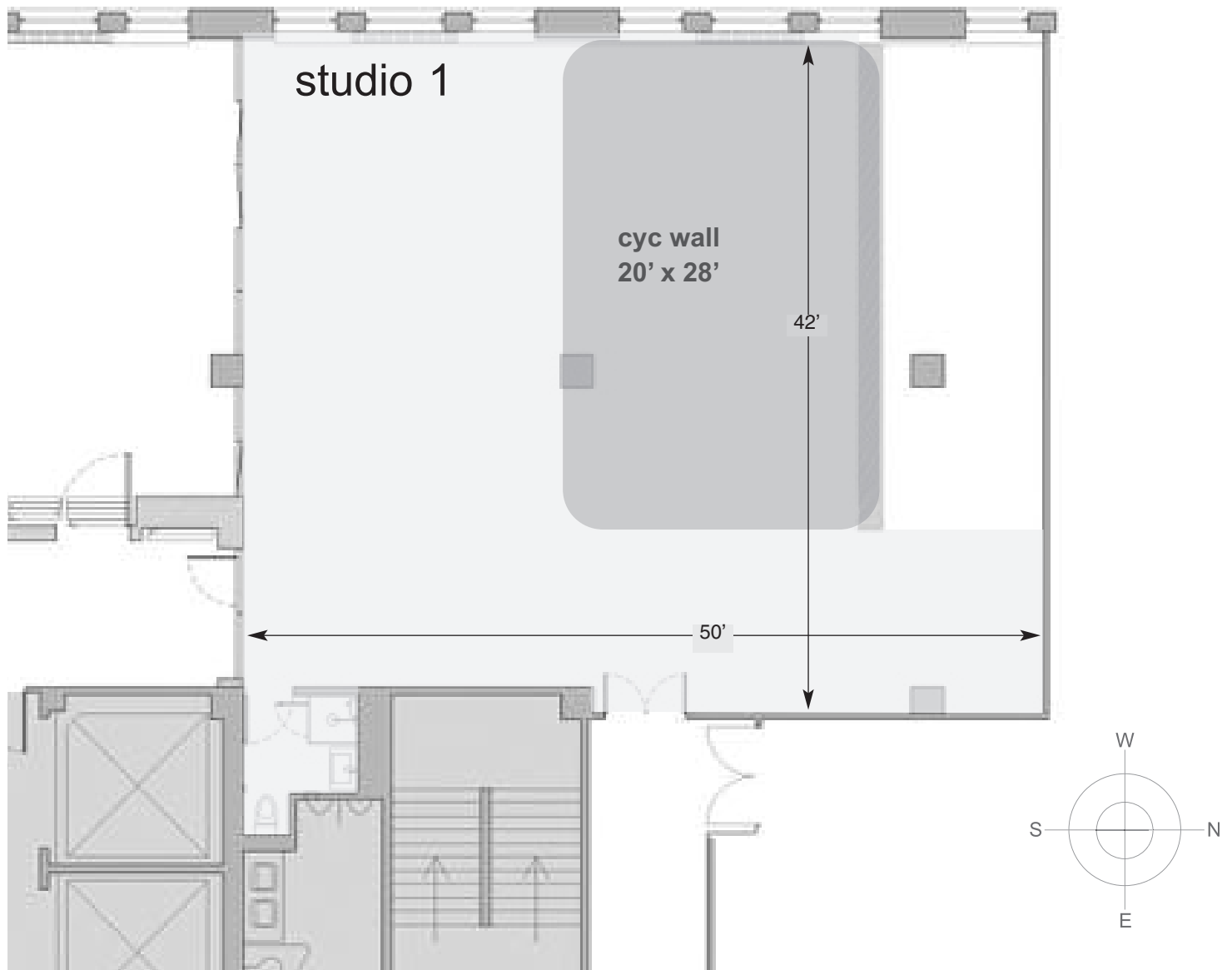
Power: 150 amp 3 phase

Daylight Cyc 20' x 28'

Private Bath with Shower

Private Entrance

Western Exposure



studio floor plans

tribeca skyline studios

205 hudson street • penthouse • ny, ny 10013 • t. (212) 344-1999 • f. (212) 226-6203

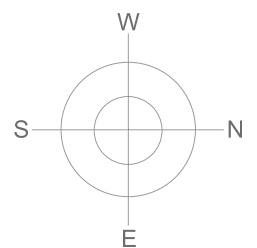
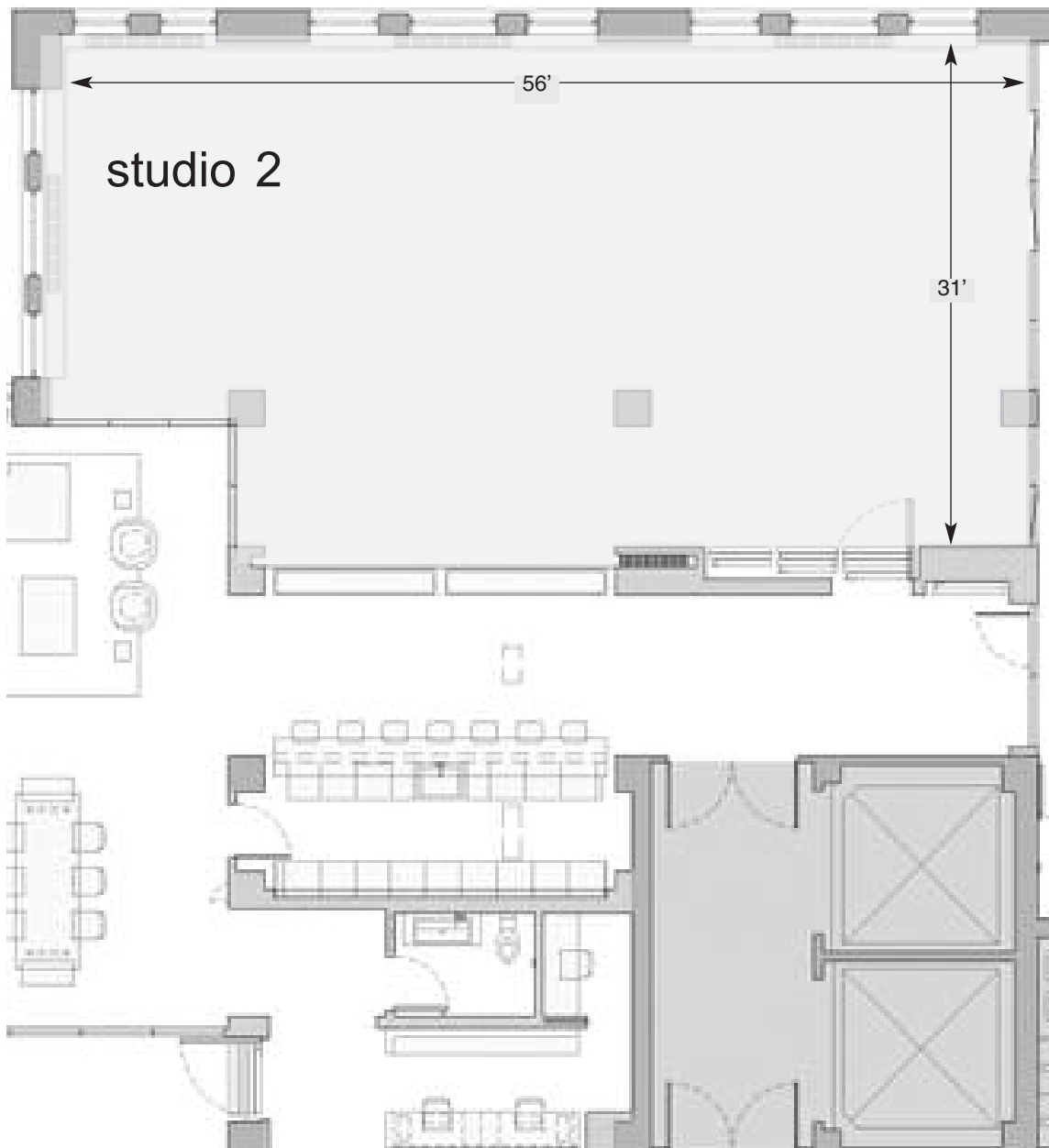
studio 2

Square Footage: 1,650

Ceiling Height: 13'

Power: 150 amp 3 phase

South Western exposure



studio floor plans

tribeca skyline studios

205 hudson street • penthouse • ny, ny 10013 • t. (212) 344-1999 • f. (212) 226-6203

studio 3

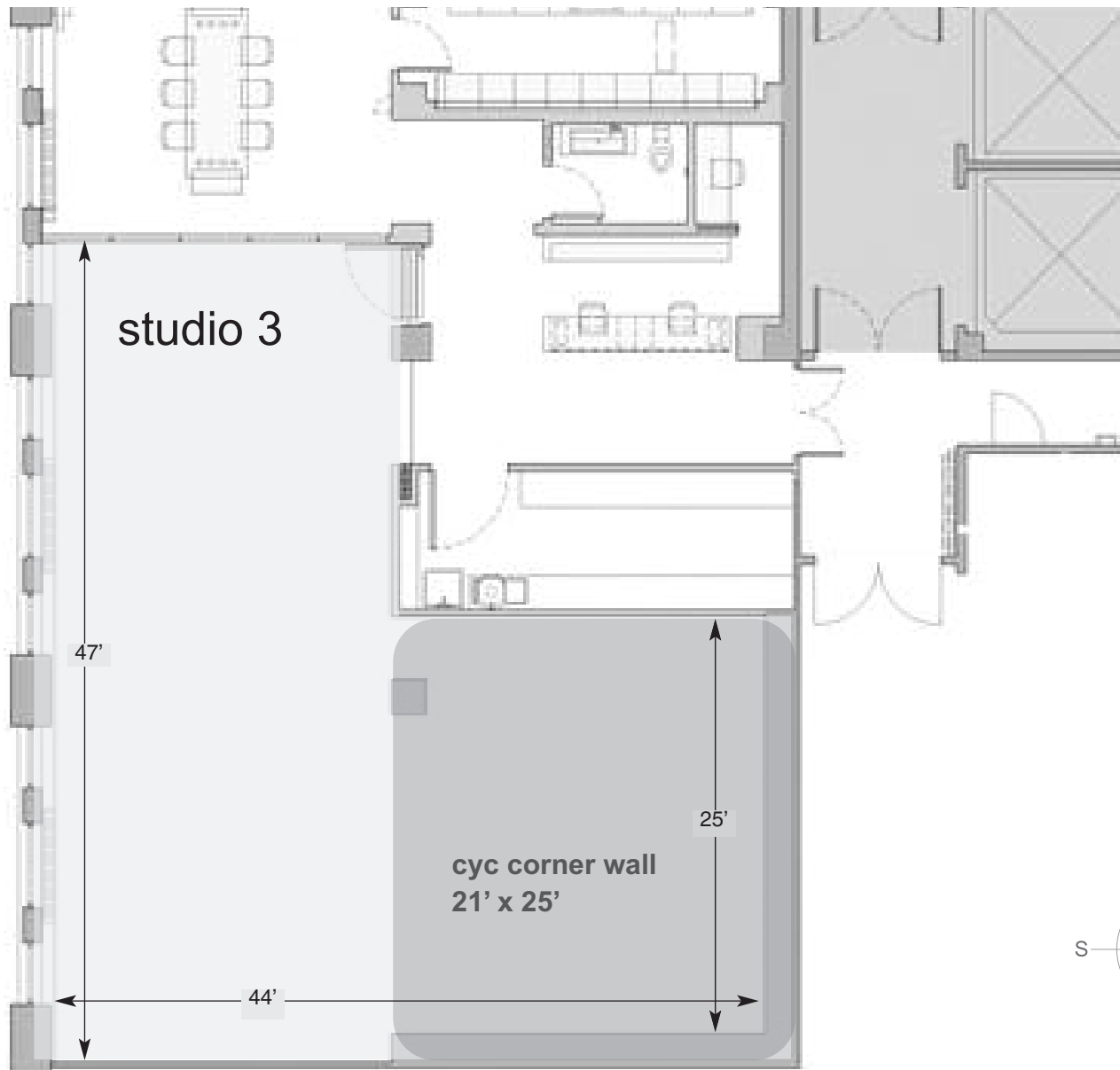
Square Footage: 1,600

Ceiling Height: 13'

Power: 150 amp 3 phase

Cyc 21' x 25'

Southern Exposure



studio floor plans

tribeca skyline studios

205 hudson street • penthouse • ny, ny 10013 • t. (212) 344-1999 • f. (212) 226-6203

roof deck studio

- 15,000+ sq ft
- 360° views of nyc skyline and hudson river
- finished stone decking
- outdoor furniture and plantings
- day or evening shoots/events
- area to hang backdrops for direct sunlight shoots
- elevator access

